

NonProfit
Organization
US Postage
PAID
Tucker, GA
Permit No. 320

**Putting orthopedic
advances into motion.**

From sports medicine, back pain and osteoporosis care to total joint replacement, arthroscopy and innovative navigated surgery, we'll help you get the most out of life. With the most comprehensive and experienced orthopedic specialty care.

For more information about our orthopedic services, visit us online at www.LRMC.com.

For a free physician referral, call us at 682-LRMC (5762).

ORTHOPEDIC
SERVICES:

BONE DENSITY
SCREENINGS

BACK PAIN DIAGNOSIS
AND TREATMENT

ARTHROSCOPY

TOTAL JOINT
REPLACEMENT

PARTIAL KNEE
RESURFACING

NAVIGATED
SURGERY



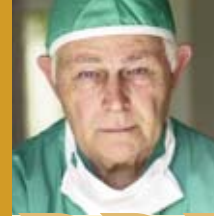
P.O. Box 95448
LAKELAND, FL 33804-9850

MAIN NUMBER:
863-687-1100

PHYSICIAN REFERRAL:
863-682-LRMC (5762)

TDD: 863-682-1311
(HEARING IMPAIRED CALLERS ONLY)

WWW.LRMC.COM



PRECISION

Orthopedic Services at Lakeland Regional



Advanced technology close to home.

The skill and
technology to put
you back on top.

Life changes significantly when you're faced with an orthopedic illness or injury. The ability to perform everyday tasks, not to mention sports and leisure activities, can become overwhelming. But thanks to the advanced orthopedic care at Lakeland Regional, patients are discovering renewed mobility, reduction of pain, and best of all, the return to normal, active lives. No other hospital in Polk County gives you the orthopedic treatment options like that of LRMC.



Back Pain, Arthritis and Osteoporosis

Medical advances continue to improve quality of life for those suffering from chronic back pain, arthritis and osteoporosis. LPMC's orthopedic staff is always current on the latest drug therapies and treatments for preventing, targeting and alleviating symptoms related to these conditions.

The best care starts with proper screening and diagnosis. Whether it's bone density screenings, nutrition and exercise instruction, or recommended lifestyle changes, our orthopedic specialists are highly knowledgeable in the latest techniques for maintaining strong muscles, keeping joints functioning and reducing the risk of fractures.



Sports Injuries

Breaks and tears require the most specialized care and progressive procedures. Arthroscopy allows us to repair torn tendons and ligaments, as well as remove damaged cartilage and bone, with superior surgical visibility through incisions as tiny as a quarter of an inch. And for sprains and strains, our dedicated team of orthopedists offers the same level of expertise — giving you freedom from pain and renewed independence.

Navigated Surgery

As technologies get better, so do our outcomes. LPMC orthopedic surgeons offer improved results and added precision with computer-assisted surgeries performed utilizing a complex navigation system. This system allows LPMC surgeons to more accurately align implants, reducing stress and weight-bearing forces on the replacement joint and thus increasing the implant's longevity. These complicated surgeries still require great skill, but the computer gives our surgeons information that otherwise would not be available.

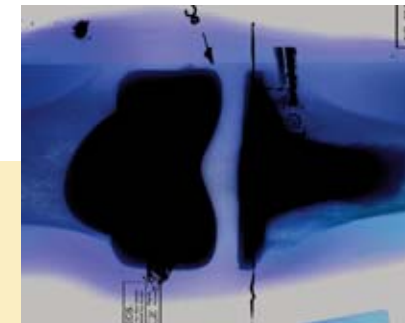


Total Joint Replacement

Lakeland Regional not only leads the area in the number of joint procedures performed, we're also recognized statewide for our expertise and capabilities in total joint replacement. Which means here you'll find the area's most experienced surgeons and staff. What's more, LPMC offers the most modern implants with sizes based on anthropometric studies, giving you a more accurate fit to ensure a more natural range of motion.

Partial Knee Resurfacing

LPMC is leading the way in partial knee resurfacing, a new minimally invasive alternative that in certain cases alleviates the need for total joint replacement. Instead of replacing the entire knee, this innovative procedure replaces only the side of the knee damaged by arthritis. The incision is small. There's less pain. And most patients are up and walking the same day.



Specialized Staff and Onsite Rehabilitation

At LPMC you'll not only receive the expertise of the most skilled orthopedic specialists in Polk County, you'll also benefit from the added training and support of our specialized orthopedic nurses. To complement their care, we have specially trained orthopedic physical therapists available 7-days-a-week to work with patients in their rooms and on the unit to ensure every opportunity for a complete and healthy recovery.



Advanced technology close to home.