

NonProfit  
Organization  
US Postage  
**PAID**  
Tucker, GA  
Permit No. 320

***A higher level of care.  
Exceeding expectations.***

Skill, technology and personalized care are just some of the ways we're helping people get more out of life following surgery. It's the level of care most people find only at major teaching hospitals and large metropolitan facilities, but you can benefit from it right here at home.

For more information about our surgical services, visit us online at [www.LRMC.com](http://www.LRMC.com).

Or for a free physician referral, call us at 682-LRMC (5762).

SURGICAL  
SPECIALTIES:

GENERAL  
CARDIOVASCULAR  
NEUROSURGERY  
ORTHOPEDECS  
TRAUMA  
ONCOLOGY  
GYNECOLOGY  
UROLOGY  
ENT  
VASCULAR



P.O. Box 95448  
LAKELAND, FL 33804-9850

MAIN NUMBER:  
863-687-1100

PHYSICIAN REFERRAL:  
863-682-LRMC (5762)

TDD: 863-682-1311  
(HEARING IMPAIRED CALLERS ONLY)

[WWW.LRMC.COM](http://WWW.LRMC.COM)



**LEADING  
Surgical Services at  
Lakeland Regional**

**Lakeland  
Regional  
Medical Center**  
*Advanced technology close to home.*

**Setting new  
standards with  
surgical advances.**

Whether you're having a routine appendectomy or undergoing delicate brain surgery, you want the most specialized and experienced care. Which is exactly what you'll find at Lakeland Regional Medical Center. In fact, no other facility in Polk County offers more skill and innovation in as many surgical specialties.

As a minimally invasive surgical center, we're also performing procedures with greater precision and less recovery time than ever before. Ensuring the best possible outcomes, supporting you throughout the process, and giving you peace of mind are what our surgical services are all about.



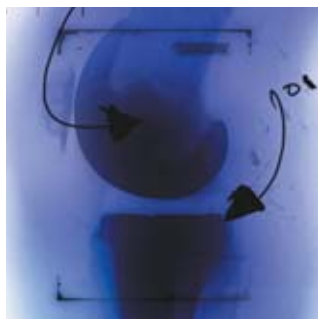
## Neurosurgery

Life threatening brain tumors. Head or neck trauma. Debilitating back pain. All are conditions that are successfully treated by our neurosurgical specialists at LRMC. As the only facility in Polk County with the Vector Vision® Brain LAB, a leading image guided system, we offer greater precision in the most delicate procedures. We also house the area's only Gamma Knife® which, contrary to its name, is a nonsurgical radiation tool that targets brain tumors while preserving surrounding healthy tissue. Whether it's cervical and lumbar fusions or sophisticated brain surgery, we're focused on making your life more comfortable and productive.



## Orthopedic Surgery

Simple motions like reaching or bending are often taken for granted. Injury or illness can make these everyday tasks more painful and difficult. At LRMC, we offer one of the largest orthopedic programs in the area designed to diagnose, treat and rehabilitate even the most severe orthopedic problems. Our orthopedic surgeons are skilled at arthroscopy, minimally invasive joint replacement and partial-resurfacing joint surgery. When a case permits, computer-assisted orthopedic surgeries are performed utilizing a complex navigational system. This technology allows our surgeons more precision and improves outcomes. Procedures like these significantly restore mobility and quality of life for people with sports injuries, arthritis and osteoporosis.



## Robotic Surgery

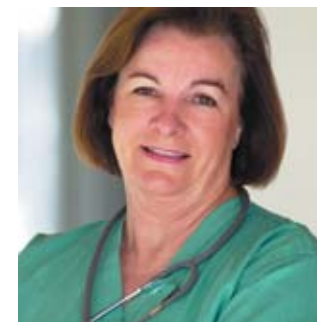
LRMC patients benefit greatly from the less invasive nature of robotic surgery for open heart, urology and gynecology, including robotic hysterectomy. The result is reduced trauma, postoperative pain and surgical complications. LRMC utilizes the da Vinci® surgical system, the first totally "intuitive" laparoscopic surgical robot in existence. It's also the first operative surgical robotic system in the world cleared by the U.S. Food and Drug Administration (FDA). If there's a better surgical technique or technology, you can be sure we're committed to bringing it to you.



Photo courtesy of Intuitive Surgical®

## Superior Facilities and Staff

In our 15 main operating rooms, three cardiovascular and three dedicated obstetric/gynecologic operating rooms, you have the advantage of the latest surgical equipment, including lasers, laparoscopy and robotics. All of which are used



by our leading surgeons. Equally important is the nurse who is assigned to you, serving as an advocate throughout the entire surgical experience. The 1:1 registered nurse to patient ratio in our operating

rooms further exemplifies LRMC's commitment to patient safety and care.



Advanced technology close to home.

